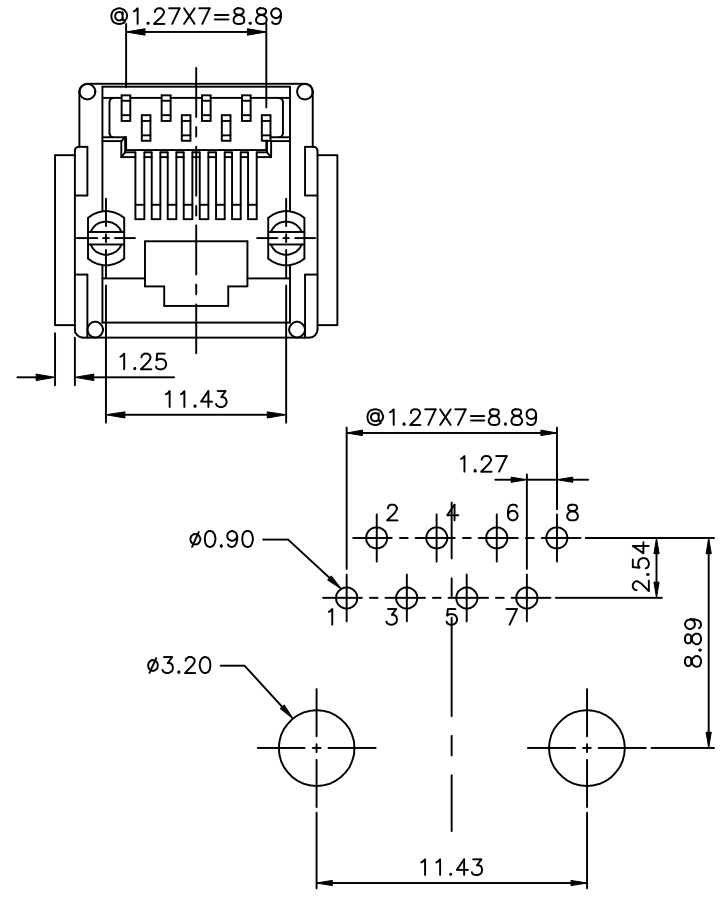
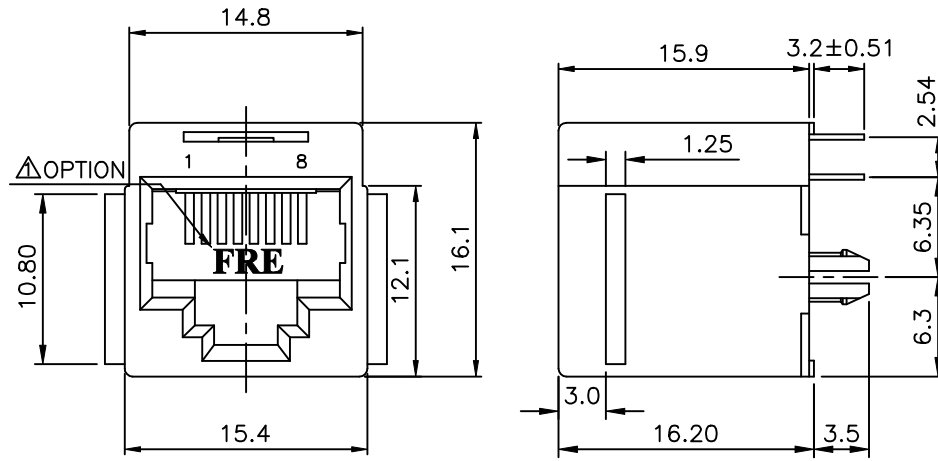


REVISION RECORD				
REV	ECO	DESCRIPTION	DRFT	CHKD
△		ADD PART NUMBER OPTION	Christ 5/15/01*	
△		NOTES MODIFY	Among 11/01/04	



PC Board Layout Component Side Shown

NOTES:

ELECTRICAL:

1. VOLTAGE RATING : 125 VAC RMS.
2. CURRENT RATING : 1.5 AMP.
3. CONTACT RESISTANCE : 30 MILLIOHMS MAX.
4. INSULATION RESISTANCE: 1000 MEGOHMS MIN @ 500 VDC.
5. DIELECTRIC STRENGTH : 1000 VAC RMS 60Hz, 1MIN.

MECHANICAL:

1. HOUSING MATERIAL : GLASS FILLED POLYESTER UL94V-0.
2. CONTACT MATERIAL : PHOSPHOR BRONZE t=0.35mm.
- △ 3. PLATING : GOLD PLATING OVER NICKEL.
4. OPERATING LIFE : 750 CYCLES MIN.
5. PCB RETENTION PRE-SOLDER : 1 LB MIN.
6. PCB RETENTION POST-SOLDER: 10 LBS MIN.

ENVIRONMENTAL:

1. STORAGE : -40°C TO +85°C.
 - △ 2. OPERATION: -40°C TO +85°C.
- MATES WITH MODULAR PLUG CONFORMING TO FCC PART 68, SUBPART F.

CUL FILE NO. E163191
PART NUMBER: E5288-X0003X

- | | | |
|-----------------|--------|--------|
| △ 3-W/ FRE LOGO | 1- 3u" | 2- 6u" |
| R-W/O FRE LOGO | 3-15u" | 4-30u" |
| | 5-50u" | |

DETACHED LISTS	← MM (INCH) →		DFTO JACK	DATE 12/4/99'	FULL RISE ELECTRONIC CO., LTD TITLE RJ45 TOP ENTRY PCB MODULAR JACK(DIP TYPE)
	TOLERANCES EXCEPT AS NOTED		CHKD SAMMY	DATE 2004/11/17	
			MFO	DATE	
			APPVLUSEHNG	DATE 2004/11/17	
MM		±	MATERIAL :		
.0 ± 0.2		±	QT'Y :		
.00 ± 0.15		±	FINISH :		
.000 ± 0.075		±	SCALE :		
ANGLES ± 0.5		THIRD ANGLE PROJECTION			DO NOT SCALE DRAWING
			SHEET X OF Y		

DRAWING NO. GE523A20 SIZE A3 REV 11/01/04
/PART NO. SEE NOTE 2